

Chome

On display in the store's colorful front room: a Chinese Chippendale étagère and vintage Piero Fornasetti plates.

All in Good Taste

L.A.'s design hub gets a delectable new décor destination

Earlier this year, interior designer Todd Alexander Romano celebrated the 10th anniversary of his Manhattan business. "I thought to myself, 'What am I going to do for the next 10 years?'" he says.

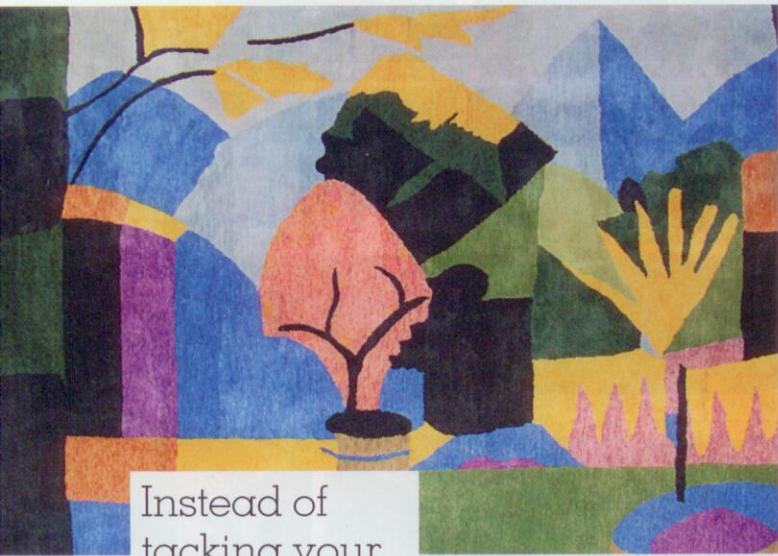
The answer: for starters, open a store in Los Angeles. Divided by a peaceful courtyard, Romano's new La Cienega Design Quarter venture is composed of two light-filled, colorful troves of furniture and objects—some old, "some nowish." >>

<< I'm not an antiquarian, but a decorator," he says.

Romano's offerings span the decades—from the 18th century to Mid-Century Modern to his own current designs, such as French Moderne-style sconces, a series of lacquered tables and the cozy Christopher sofa. "I'm a big fan of comfort," says Romano, who's now splitting his time between coasts. (He also carries a selection of Frederick P. Victoria & Son reproductions, and custom rugs from Langham & Fine.) It's a delightful combination of New York and California influences—Romano spent time in L.A. as a young adult—with a little Texas thrown in (he grew up in San Antonio). "Maybe that's why I like things mixed so much," he says. When he's the one doing the mixing, we like it, too. 930 N. La Cienega Blvd., L.A., 310-855-1280; toddromanohome.com. F.K.



The back room of Romano's store features Mies van der Rohe dining chairs and Bert Stern photographs of Marilyn Monroe.



Instead of tacking your child's (or your own) art to the refrigerator, send it to **Carpetzz**. The company will turn it into a one-of-a-kind, hand-tufted New Zealand wool rug. carpetzz.com.



TOP RIGHT Casamidy Hiver chair, \$1,550. ABOVE Tuell + Reynolds Gualala lamp, \$1,400.



Original Cast

Two design firms have taken a shine to nature for their latest sculpted metal pieces. **CASAMIDY** The artisanal collection's new wrought-iron Hiver chair looks like winter tree branches. Painted, though, it resembles coral. casamidy.com.

TUELL + REYNOLDS Sonoma County's Randy Tuell and Victoria Reynolds recently introduced their sinuous cast-bronze Gualala table lamp, inspired by sea kelp. 707-669-0556; tuellreynolds.com.

TODD ALEXANDER ROMANO: EDWARD DUARTE